

**Hampshire Health and Adult Social Care Select Committee
8th March 2022**

**Frimley Health NHS Foundation Trust
Covid-19 Update**

**Lorna Wilkinson
Chief of Nursing and Midwifery**

Summary

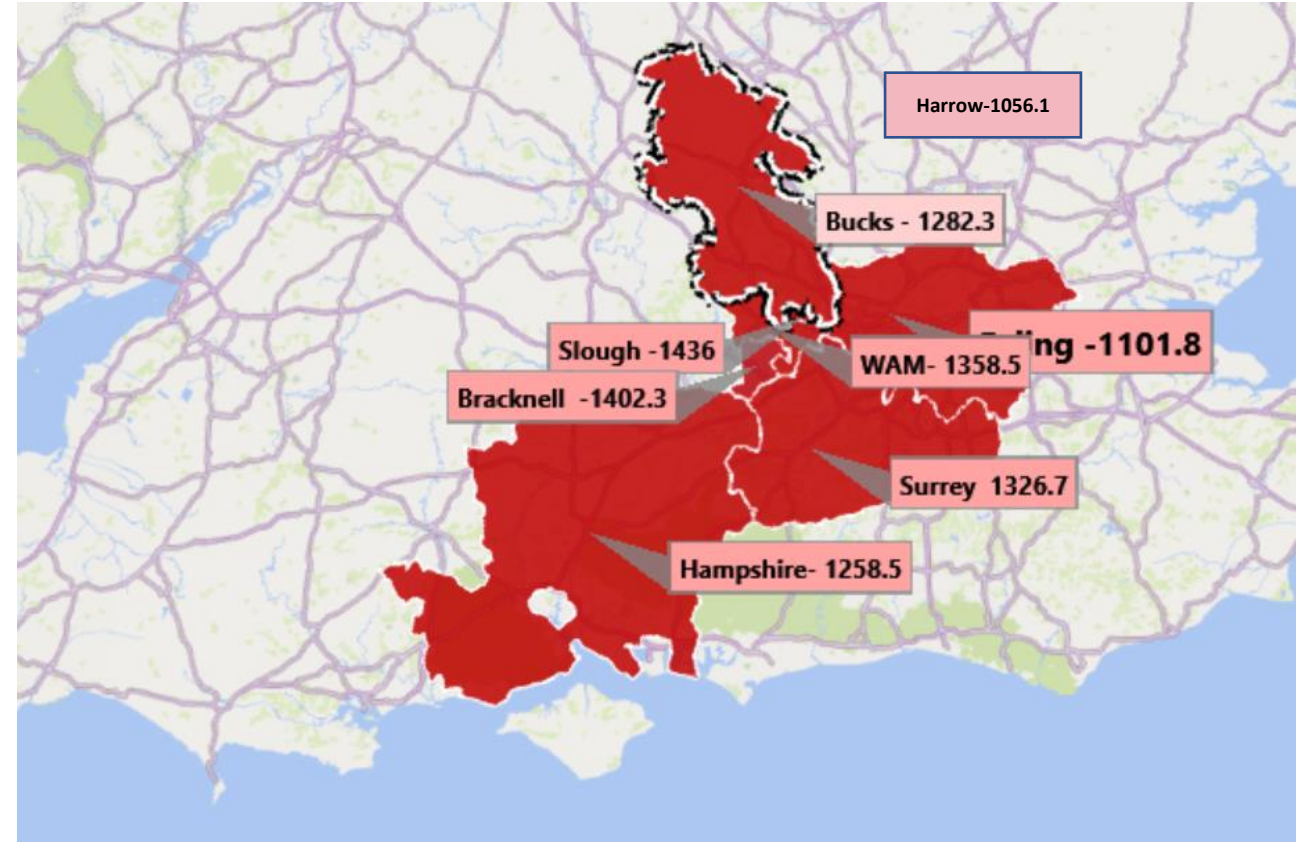
- **Omicron continues to have an impact on the health and care services both on the number of patients and admissions but also on staffing levels. There has been a considerable level of staff sickness across the NHS during the recent period, this has been the picture at FHFT as elsewhere.**
- **The national vaccination programme continues to deliver across the nation with now more than four in five adults over the aged of 18 having now received their life-saving booster vaccines.**

NHS Priorities and Planning Guidance

- **The NHS has published its priorities and operational planning guidance for 2022-23. The guidance clearly sets out the priorities for the year ahead. Despite the challenging environment, the guidance reconfirms the need to continue to recover and restore our services to pre-covid levels and beyond. There are new demands on health and care services and a backlog of demand for elective care services as a direct result of the pandemic**

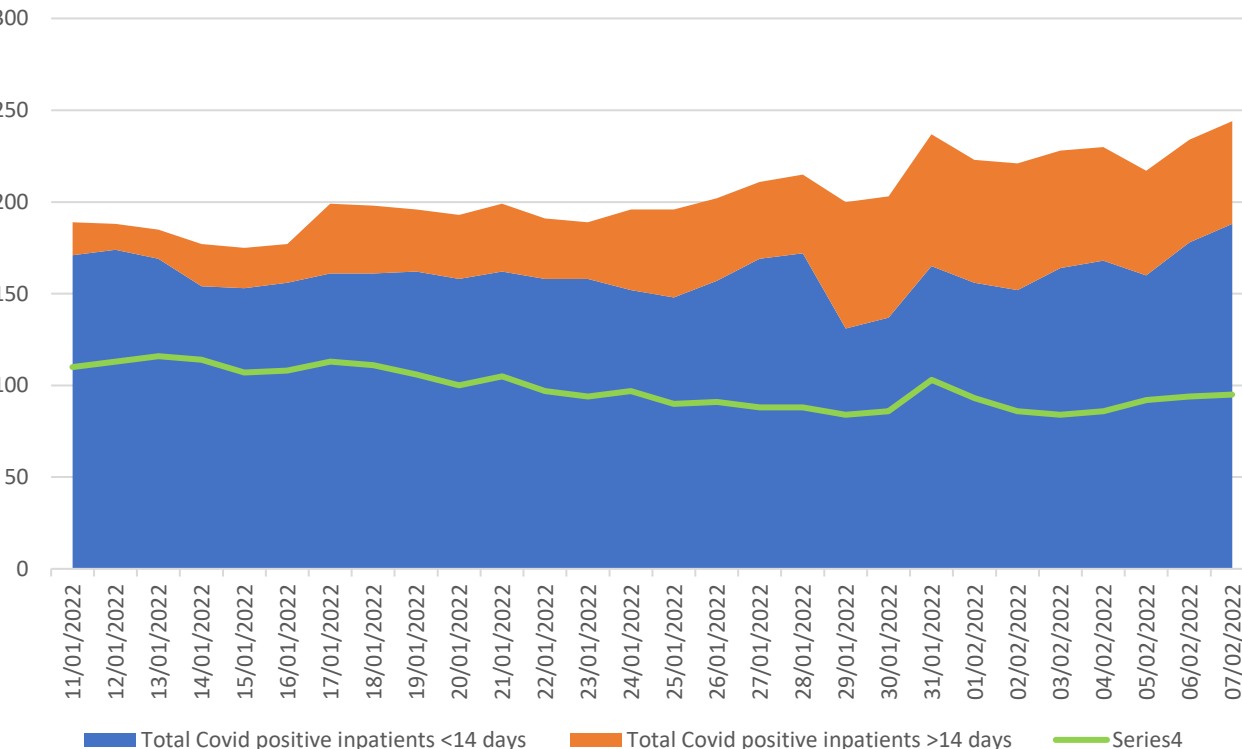
Covid Context

- The desired reduction in Covid Incidence has stalled
- The Covid ED / admissions volumes have remained at similar levels with Slough and Bracknell of particular interest
- Incidence in the catchment is higher than national incidence of 1006.8 (last week 994).

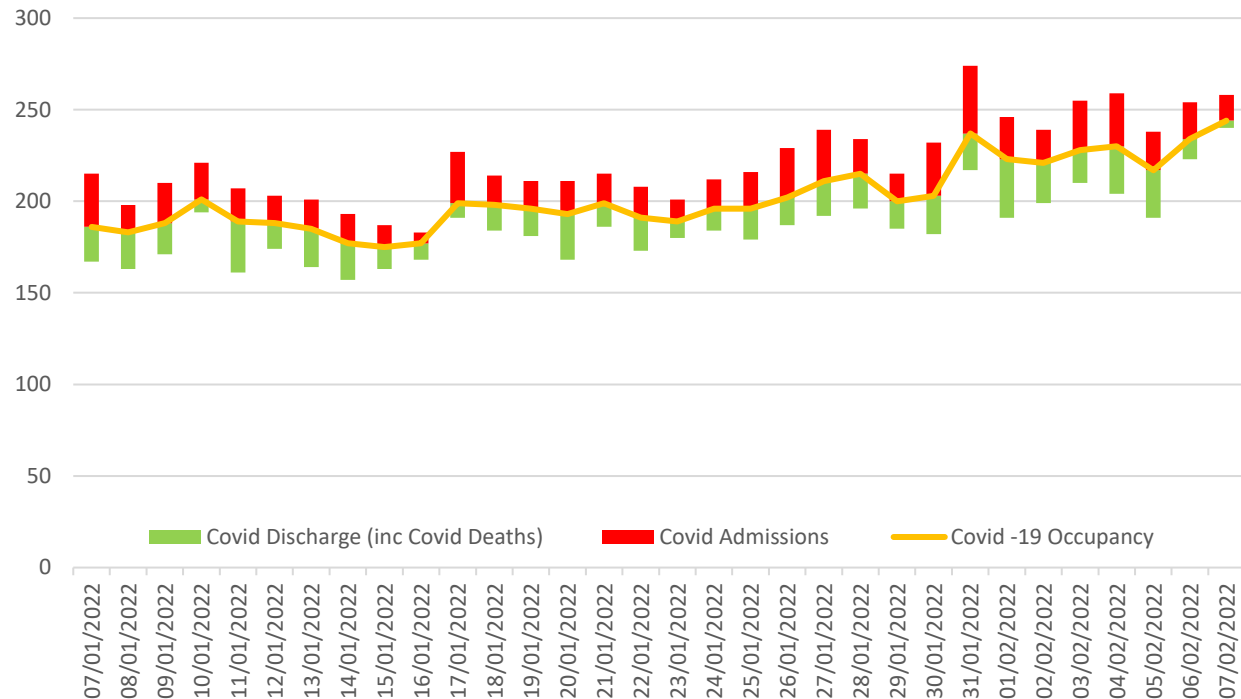


The following slides provide the most recent Covid Operational Update as at Monday 7th February 2022

FHFT Covid-19 Inpatients



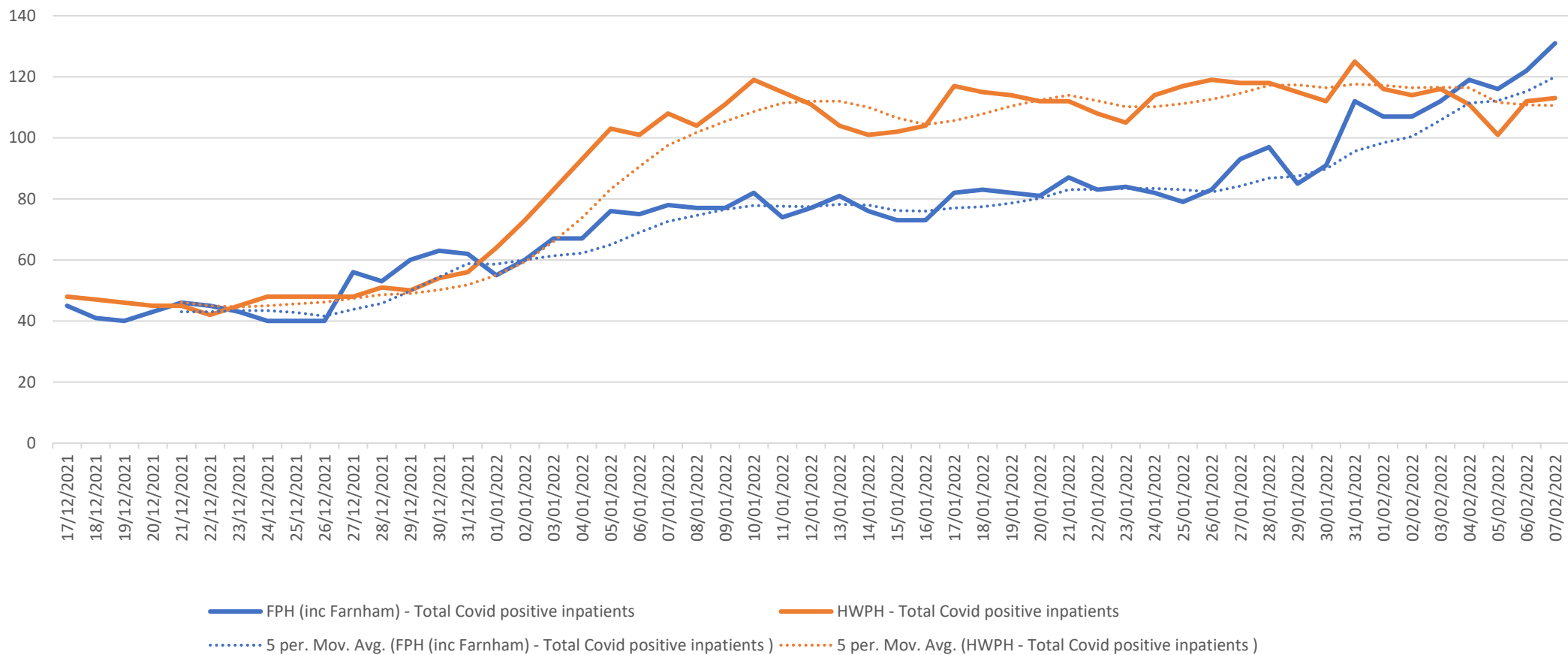
FHFT - Covid-19 Admissions / Discharges



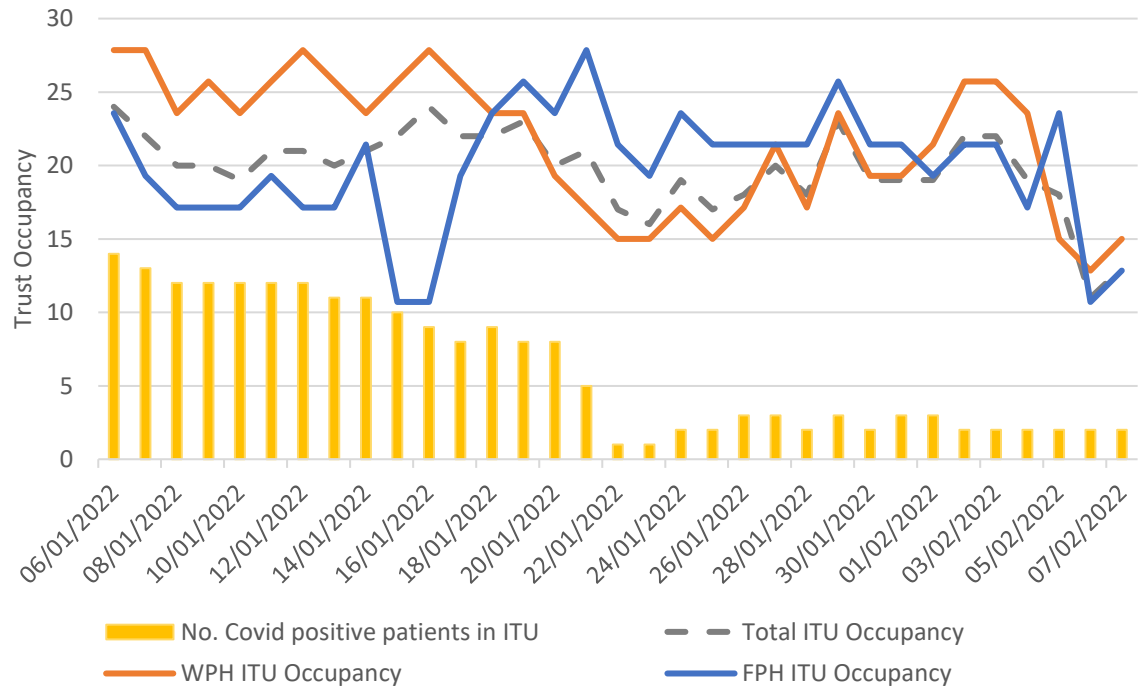
Date	Total Covid positive inpatients <14 days	Total Covid positive inpatients >14 days	New admission reason: Covid	Total Covid positive inpatients
07/02/2022	188	56	95	244

Date	Covid inpatient	Covid Discharge (inc Covid Deaths)	Covid Admissions
07/02/2022	244	4	14

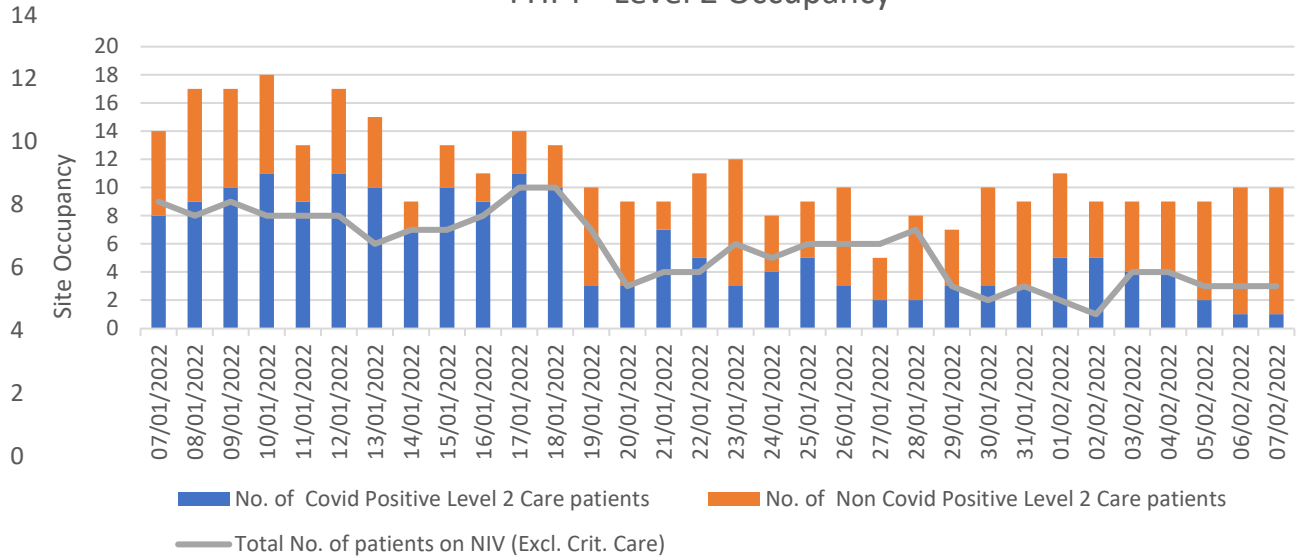
FHFT - Covid Inpatients



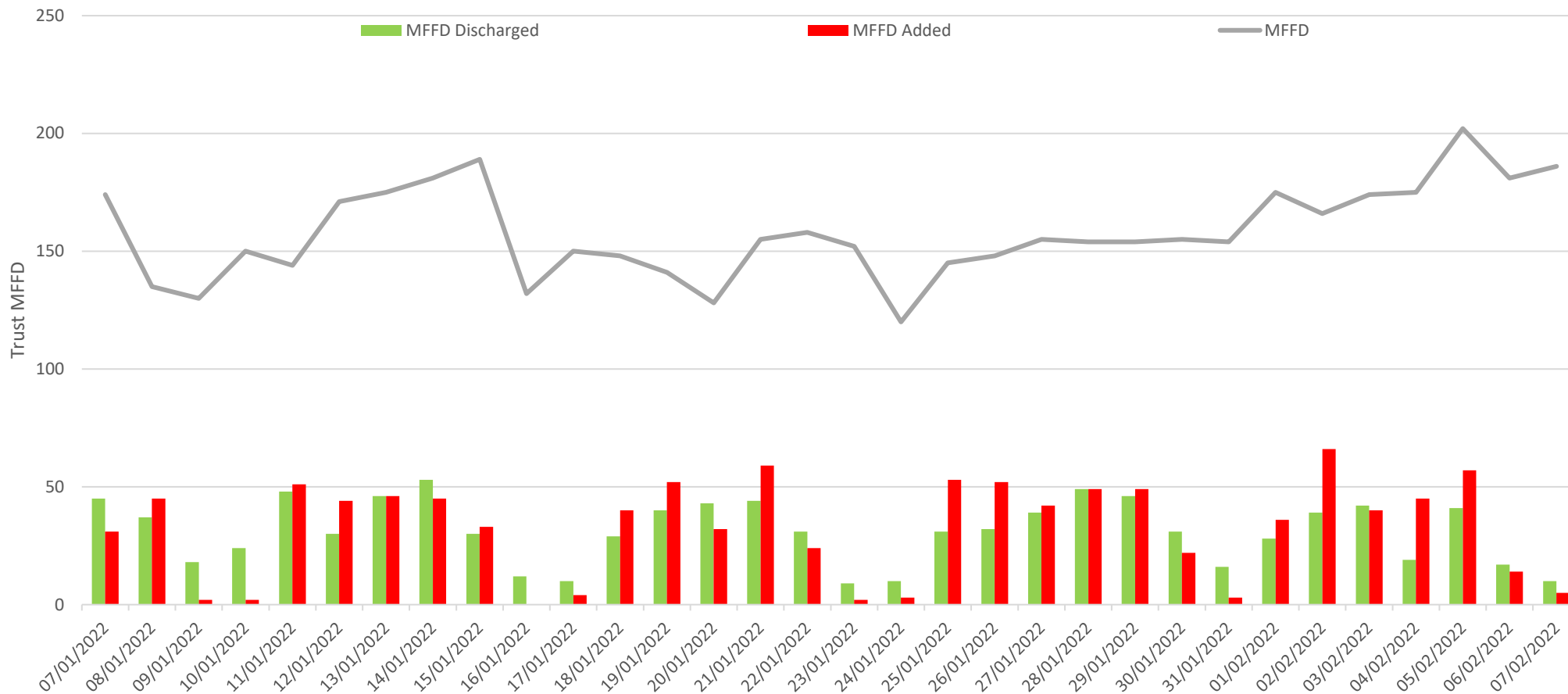
FHFT - Critical Care Occupancy



FHFT - Level 2 Occupancy

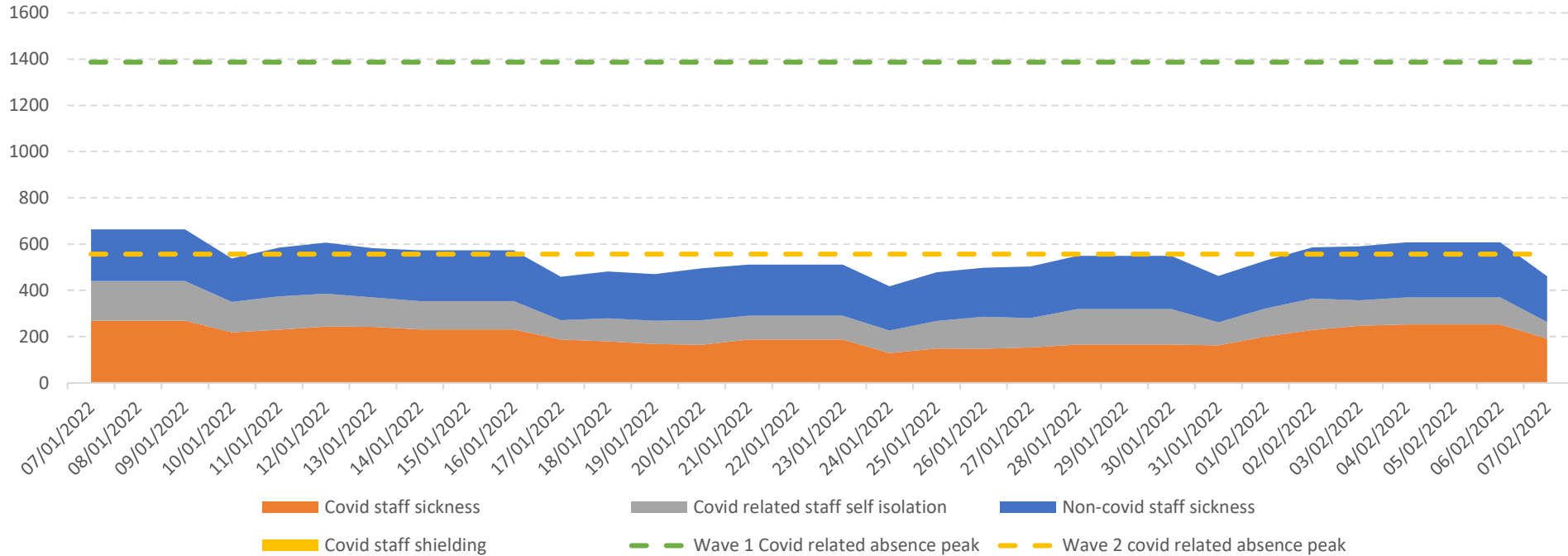


FHFT - MFFD



	FHFT Total MFFD	MFFD Added Yesterday	MFFD Discharged Yesterday
07/02/2022	186	5	10

FHFT Staff Sickness



- **FHFT:** 252 (down by 116) staff with COVID-19 related sickness or self-isolating (out of total 451 sickness, down by 157) Covid absence equates for 56.1% of absence at FHFT. Current overall absence rate from HealthRoster 2.6%
- **Frimley Park:** 128 (down by 76) staff with COVID-19 related sickness or self-isolating (out of total 222 sickness, down by 93) Covid absence equates for 57.7% of absence at FPH. Current overall absence rate from HealthRoster 2.4%
- **Wexham Park:** 109 (down by 38) staff with COVID-19 related sickness or self-isolating (out of total 195 sickness, down by 53) Covid absence equates for 55.9% of absence at WPH. Current overall absence rate from HealthRoster 3.0%